

PROJECT TITLE

SOLAR-ERA.NET Seventh Joint Call Fullproposal Template

TOPIC

A. Advanced industrial PV technologies

SUBTOPIC

A3. Advanced thin film technologies, in particular copper indium gallium diselenide (CIGS), A5. Manufacturing issues and next generation processing equipment for advanced solar cells, A9. Industry 4.0 ("smart factory") approaches to advanced PV manufacturing

PROJECT DURATION

36 Months (09 / 2020 to 08 / 2023)

TOTAL REQUESTED FUNDING

635.370 €

TOTAL COSTS

755.936 €

CONSORTIUM

P 1	Mrs Partner1 First name Partner1 Family name Partner1 Organisation/Institution/Company Partner1 Department	Partner1 Street, no. , Partner1 P.O. box , Partner1 Zip/postal code Partner1 Town/city Belgium	ptj-solar-eranet@fz-juelich.de Tel.: 0032 1234 Mobile: 0032 1234 Fax: 0032 1234 http://www.solar-era.net/
P 2	Mr Partner2 First name Partner2 Family name Partner2 Organisation/Institution/Company Partner2	Partner2 Street, no. , Partner2, Partner2 Zip/postal code Partner2 Germany-Ptj	ptj-solar-eranet@fz-juelich.de Tel.: 0049 1234 Mobile: 0049 1234 Fax: 0049 1234 http://www.solar-era.net/
P 3	Mrs Partner3 First name Partner3 Family name Partner3 Organisation/Institution/Company Partner3 Department	Partner3 Street, no., Partner3 , Partner3 Zip/postal code Partner3 Town/city Spain-AEI	ptj-solar-eranet@fz-juelich.de Tel.: 0032 1234 Mobile: 0032 1234 Fax: 0032 1234 http://www.solar-era.net/

PROJECT KEYWORDS

Supplementary keywords

solar, eranet, call7

A. PROJECT SUMMARY

Please enter a short summary of your project here.

You have the opportunity to upload up to 4 images in sections A to E. All pictures need to be uploaded in section "image upload". To insert them, you enter the place marker "[[figureX]]" into your text (where the image should appear). By replacing the X with the number of the image you create the link to the Image.

For example (Figure 1) is uploaded under images exist and can therefore be referenced here with the command



Max file size: 600px x 600px, 2MByte
Allowed formats are jpg, png or gif

Information is required for submission.

You have a maximum of 2000 characters.

B. OBJECTIVES AND TARGETS

Scientific, technological and commercial objectives and challenge.

Give evidence relating to the scientific, technological and commercial objectives and challenges of the project, outlining:

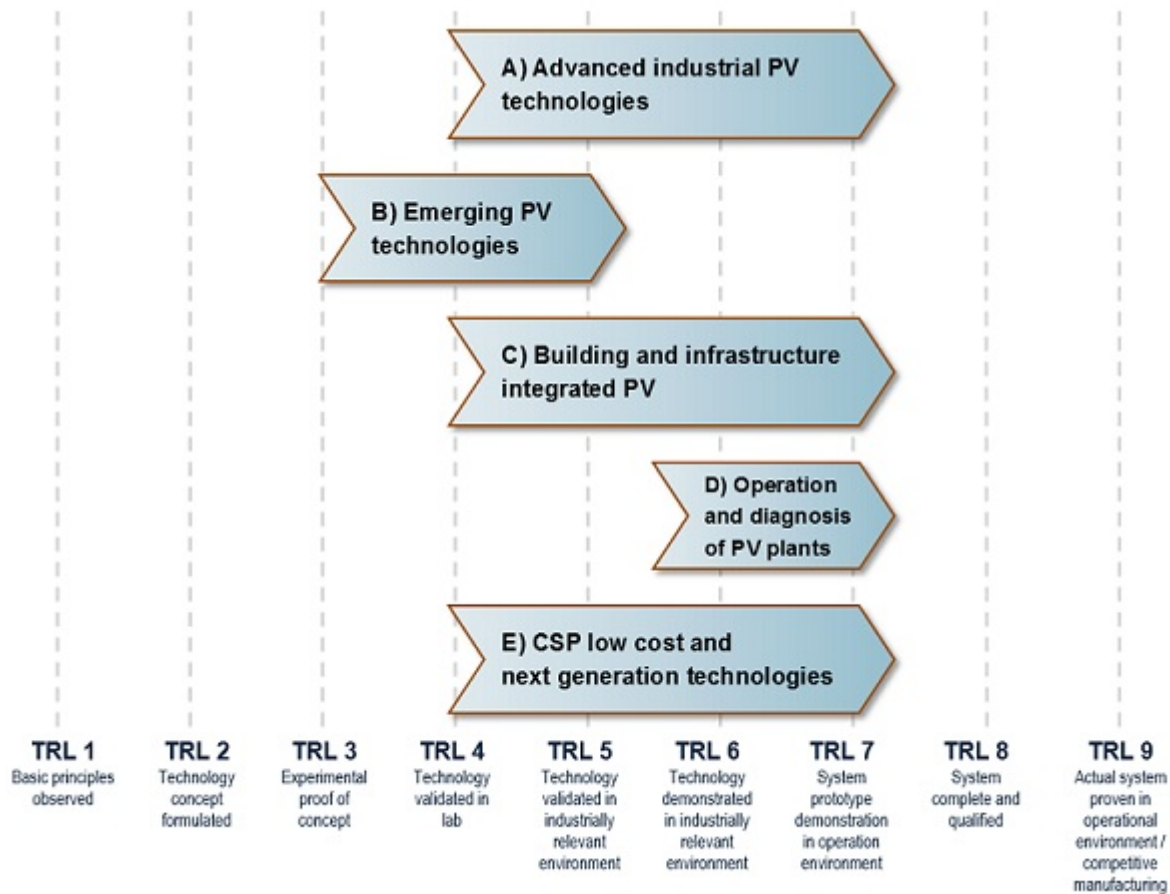
- Overall aims and objectives of the projects,
- Key Performance Indicators (see SET-Plan and related Implementation for CSP / STE) and relevant targets to be achieved in the project.
- Scientific, technical and commercial challenges

You have a maximum of 5000 characters.

C. EXPECTED RESULTS

Innovation or innovation potential, economic and environmental benefit, commercialization, major advantages / progress versus state of the art thanks to the project proposed, progress with respect to Technology Readiness Level (TRL) from start to end of project (according Horizon2020 terms), contribution to achieving the objectives of the SET-Plan.

The expected results can also be referenced by an image as shown in Figure 2:



This information is required for submission.

You have a maximum of 10000 characters

D. TECHNOLOGY READINESS LEVEL

(TRL)

Please give the Technology Readiness Levels (TRL) at the beginning and at the end of the project.

a) TRL at the beginning of the project

b) TRL at the end of the project

TRL 1 – basic principles observed

TRL 2 – technology concept formulated

TRL 3 – experimental proof of concept

TRL 4 – technology validated in lab

TRL 5 – technology validated in relevant environment (industrially relevant environment in the case of key enabling technologies)

TRL 6 – technology demonstrated in relevant environment (industrially relevant environment in the case of key enabling technologies)

TRL 7 – system prototype demonstration in operational environment

TRL 8 – system complete and qualified

TRL 9 – actual system proven in operational environment (competitive manufacturing in the case of key enabling technologies; or in space)

You have a maximum of 1000 characters.

E. DESCRIPTION OF PARTNERS

Give a short description of all partners involved and their role in the project:

Founding year

Number of employees

Turnover in million Euros (MEUR) p.a.

Qualification related to the Project

Role in the Project

You have an overall maximum of 5000 characters.

F. OUTLINE OF WORK PLAN

Please outline the following:

- Project structure
- Role of each partner
- relevant expertise, resources, manpower
- Monitoring and management of the project

The individual work package description with milestones and deliverables is requested in the section "Work packages". Your data from the preproposal are transferred to section G. Work Packages.

This information is required for submission.

You have a maximum of 5000 characters.

In Addition you have the possibility to upload tables in the section "Document upload"

G. WORK PACKAGES

Table of Work Packages + Tasks

WP	Task	Start Month	End Month	WP / Task Title
1		1	36	Title of work package
	1.1	1	36	Title of task

WP	Task	Start Month	End Month	WP / Task Title
	1.2	6	12	Title of task
2		30	36	WP2
	2.1	30	36	Title of task

WP/Task No.	WP Objectives + Description / Task Description	Partner (strong = Teamleader)	Person Month(s) (strong = Teamleader)
WP1	<p>Objectives:</p> <p>Please give your main objectives for this work package in max. 1,000 characters.</p> <p>Description:</p> <p>Describe your main objectives for this work package in max. 1,000 characters</p>	P1, P2, P3	9, 13, 13
T1.1	<p>Description:</p> <p>Please give a description of the task . You have a maximum of 1,500 characters. In the following section, please give (1) the start and end project month, (2) person months per partner, involved in this project and state the project leader. Please note, that the person months can only be given in whole number (i.e. without decimals).</p>	P1, P2, P3	2, 5, 1
T1.2	<p>Description:</p> <p>Please give a description of the task . You have a maximum of 1,500 characters. In the following section, please give (1) the start and end project month, (2) person months per partner, involved in this project and state the project leader. Please note, that the person months can only be given in whole number (i.e. without decimals).</p>	P1, P2, P3	7, 8, 12
WP2	<p>Objectives:</p> <p>see WP1</p> <p>Description:</p> <p>see WP1</p>	P1, P2, P3	3, 6, 2
T2.1	<p>Description:</p> <p>Please give a description of the task . You have a maximum of 1,500 characters. In the following section, please give (1) the start and end project month, (2) person months per partner, involved in this project and state the project leader. Please note, that the person months can only be given in whole number (i.e. without decimals).</p>	P1, P2, P3	3, 6, 2

Table of Milestones

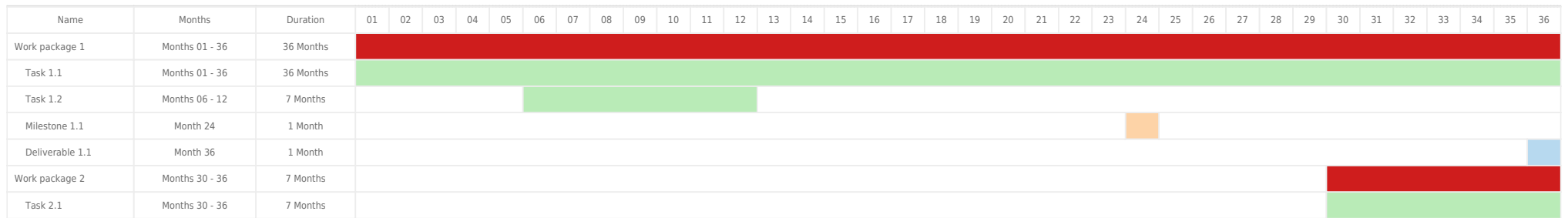
Milestone No. Month Milestone Title + Description

M1.1	24	<p>Title:</p> <p>Title of Milestone</p> <p>Description:</p> <p>Please describe the milestones for each work package. You have a maximum of 1,000 characters. In the following section, please give the project month number, when the milestone will be reached.</p>
------	----	--

Deliverable No. Month Deliverable Title + Description

D1.1	36	<p>Title:</p> <p>Title of deliverable</p> <p>Description:</p> <p>Please give a short description of the deliverables for the work packages. You have a maximum of 1,000 characters for each deliverable.</p> <p>In the following section, please state the project month, when the deliverables should be met.</p>
------	----	--

GANTT CHART



H. TRANSNATIONAL AND ADDED VALUE (TAV)

Please outline the Relevance to SOLAR-ERA.NET / SET-plan and Transnational Added Value:

- Relevance of the project to the SOLAR-ERA.NET topics
- Scientific/technical/industrial/commercial expertise of the consortium partners which is relevant for the success of the project
- Value of national subprojects
- Added value of transnational cooperation

This information is required for submission.

Your data from the preproposal are transferred to the full proposal. Please complete this section as required.

You have a maximum of 3000 characters.

I. IMPACT OF PROJECT

The expected impact of the project on the different levels such as

- Expected contribution to the reduction in the cost of CSP power, life-cycle environmental impact and other relevant Key Performance Indicators
- Expected impact on Work Programme (SC3-JA-1) objectives
- Expected ability of the project to enhance innovation capacity and integration of new knowledge in the European solar power industry
- Future market deployment potential of the proposed innovation
- Project's ability to strengthen the competitiveness and growth of European companies by developing innovations that meet the needs of European and global solar power markets and, where relevant, deliver these innovations to the market;

You have a maximum of 10000 characters

J. RISKS AND MITIGATION MEASURES

Risks and mitigation measures

You have a maximum of 2000 characters

K. SIMILAR PROPOSALS IN OTHER FUNDING SCHEMES

Please outline whether the full project, or parts of it, have been submitted to other funding schemes as a full proposal. If so, state the funding scheme and what the outcome was.

This information is required for submission.

You have a maximum of 1500 characters.

L. STATUS OF CONSORTIUM AGREEMENT

Please give a brief comment to the actual state of the consortium agreement. Include whether the consortium agreement is at the initial or final draft stage or in the process of being signed. Give an indication as to the expected date of agreement signature.

This information is required for submission.

You have a maximum of 1000 characters.

M. ADDITIONAL INFORMATION

This information is not transferred from the preproposal and is optional.

Further additional information relating to the project can be added here.

Additional information such as technical drawings, diagrams, charts etc. can be uploaded in the respective field "Image Upload".

You have a maximum of 5000 characters.

PROJECT FINANCES

Requested funding

Organisation name	Personnel	Travel	Consumables / Equipment	Subcontracts	Other	Requested Funding	Total Own Contribution	Total Costs
Partner1 Organisation/Institution/Company	155850	2100	80000	3100	0	256635	0	256635
Overhead	15585	0	0	0	0			
Partner2 Organisation/Institution/Company	130200	1550	0	0	1050	184880	42604	227484
Overhead	52080	0	0	0	0			
Partner3 Organisation/Institution/Company	185000	2700	5125	1030	0	193855	77962	271817
Overhead	0	0	0	0	0			
TOTAL	538715	6350	85125	4130	1050	635370	120566	755936

Own contribution

Organisation name	Personnel	Travel	Consumables / Equipment	Subcontracts	Other	Total Own Contribution
Partner1 Organisation/Institution/Company	0	0	0	0	0	0
Partner2 Organisation/Institution/Company	41924	357	0	0	323	42604
Partner3 Organisation/Institution/Company	74000	1080	2050	412	420	77962
TOTAL	115924	1437	2050	412	743	120566

PROJECT FINANCE COMMENTS

Partner 1 (Consortium Coordinator): Partner1
Organisation/Institution/Company

FINANCE COMMENTS

Personnel	For all Finance Comments: Brief Description (max. 1000 characters) Put number of person-months and average monthly salary (incl. social expenses) in "Description". Overhead: To be specified according to the national / regional rules (some do not ask for separate overhead costs as they are part of personnel costs). Further information can be found in the Guidelines for Proposers under "Annex – National and Regional Requirements" and / or obtained from the respective contact Points.
Travel	Travel & subsistence costs according to national / regional rules. max. 1000 characters
Consumables / Equipment	Describe the equipment needed specifically for the project and the materials to be procured specifically for the project. Example equipment: measurement device xy, required for doing special analysis, overall costs of 80.000 €. max. 1000 characters
Subcontracts	Describe the sub-contract for the task that cannot be carried out by the project consortium and its particular relevance for the project. max. 1000 characters
Other	E.g. conference fees for dissemination activities specifically related to the project. max. 1000 characters

REGISTRATION/VAT PIC NUMBER ACCORDING TO NATIONAL/REGIONAL REQUIREMENTS

Registration/VAT

ADDITIONAL FIELDS

Confirmation	yes
Confirmation	yes
Confirmation	yes
Add Text	

Partner 2: Partner2 Organisation/Institution/Company

FINANCE COMMENTS

Personnel	See comments under information of coordinator
Travel	See comments under information of coordinator
Consumables / Equipment	See comments under information of coordinator
Subcontracts	See comments under information of coordinator
Other	See comments under information of coordinator

REGISTRATION/VAT PIC NUMBER ACCORDING TO NATIONAL/REGIONAL REQUIREMENTS

Registration/VAT

ADDITIONAL FIELDS

Add Text	
----------	--

Partner 3: Partner3 Organisation/Institution/Company

FINANCE COMMENTS

Personnel	See comments under information of coordinator
Travel	See comments under information of coordinator
Consumables / Equipment	See comments under information of coordinator
Subcontracts	See comments under information of coordinator
Other	See comments under information of coordinator

REGISTRATION/VAT PIC NUMBER ACCORDING TO NATIONAL/REGIONAL REQUIREMENTS

Registration/VAT

ADDITIONAL FIELDS

Add Text	
----------	--

**Additional
Information
attached as
a PDF**

Page 1

Page2